



PEARL GTL Project

Well Engineering

HSE Performance

Anton Vos

QSGTL Well Engineering



2007

2008 (Oct 31)

Fatality

Lost Time Injury

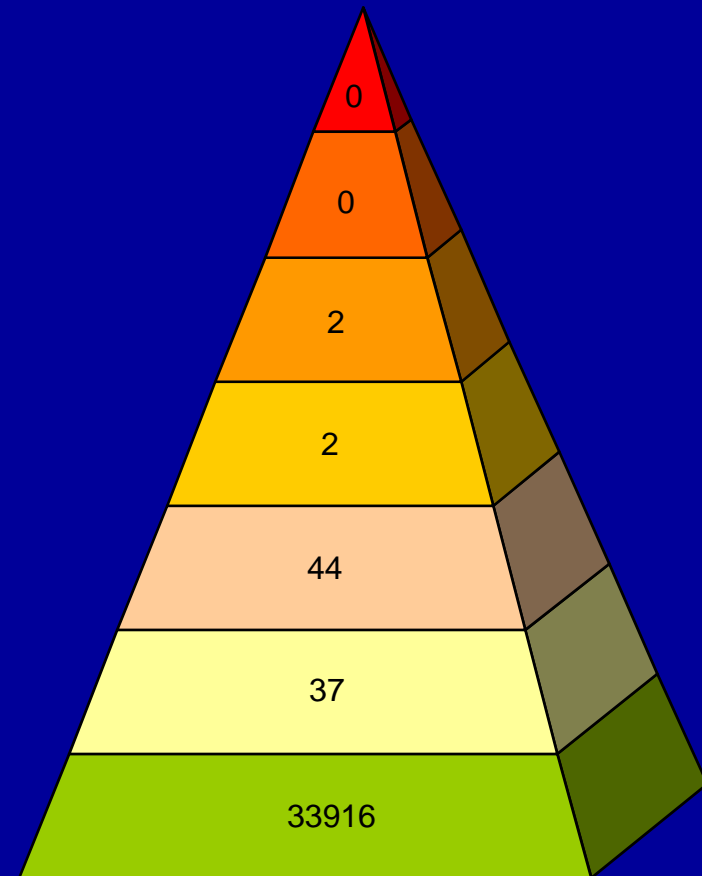
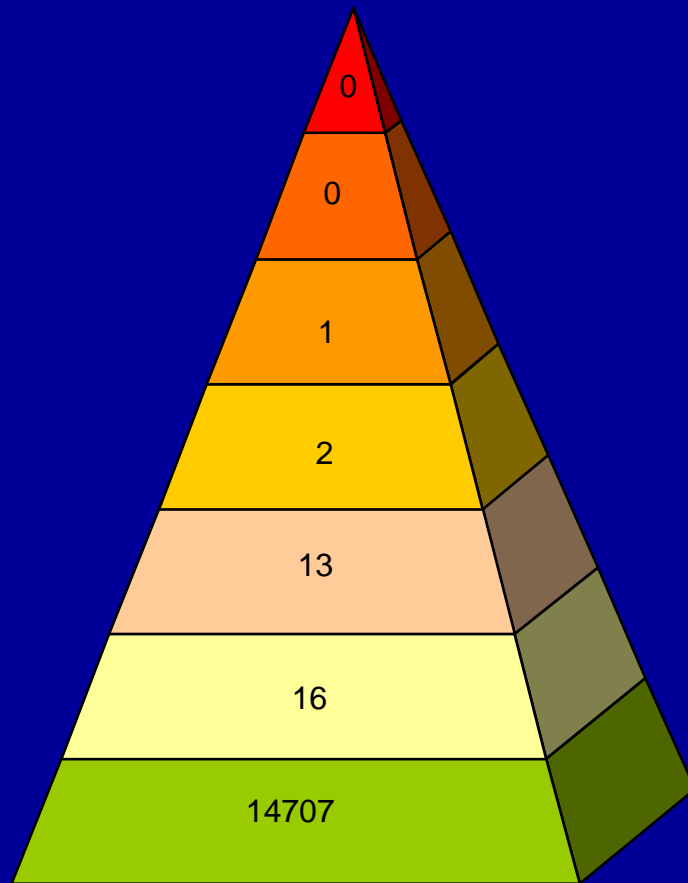
Restricted Work Case

Medical Treatment

First Aid (Not Reportable)

Near Misses

Safety Observations



QSGTL Well Engineering (cont.)



We put HSE 1st

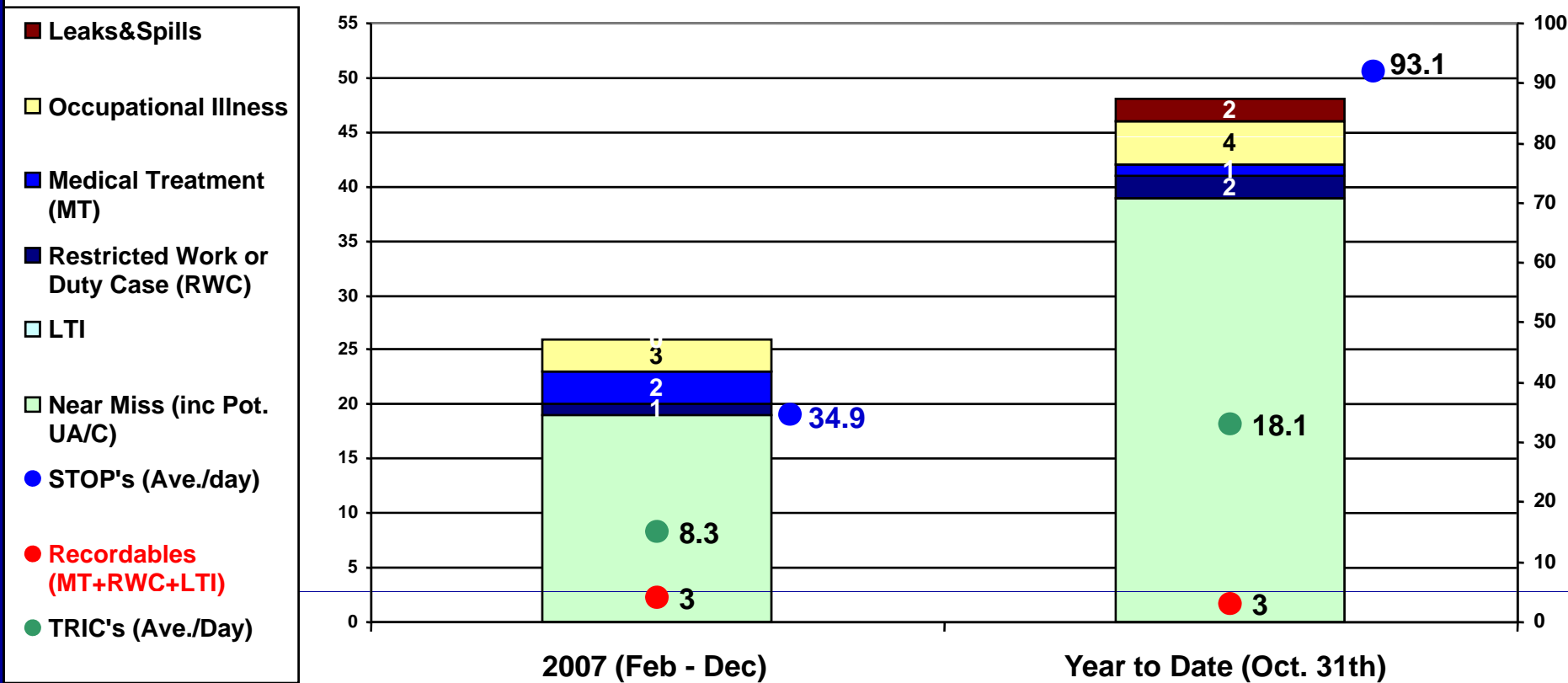
Days Since Last LTI (QSGTL Well Engineering)

1794

Days Since Last High Potential Incident

269

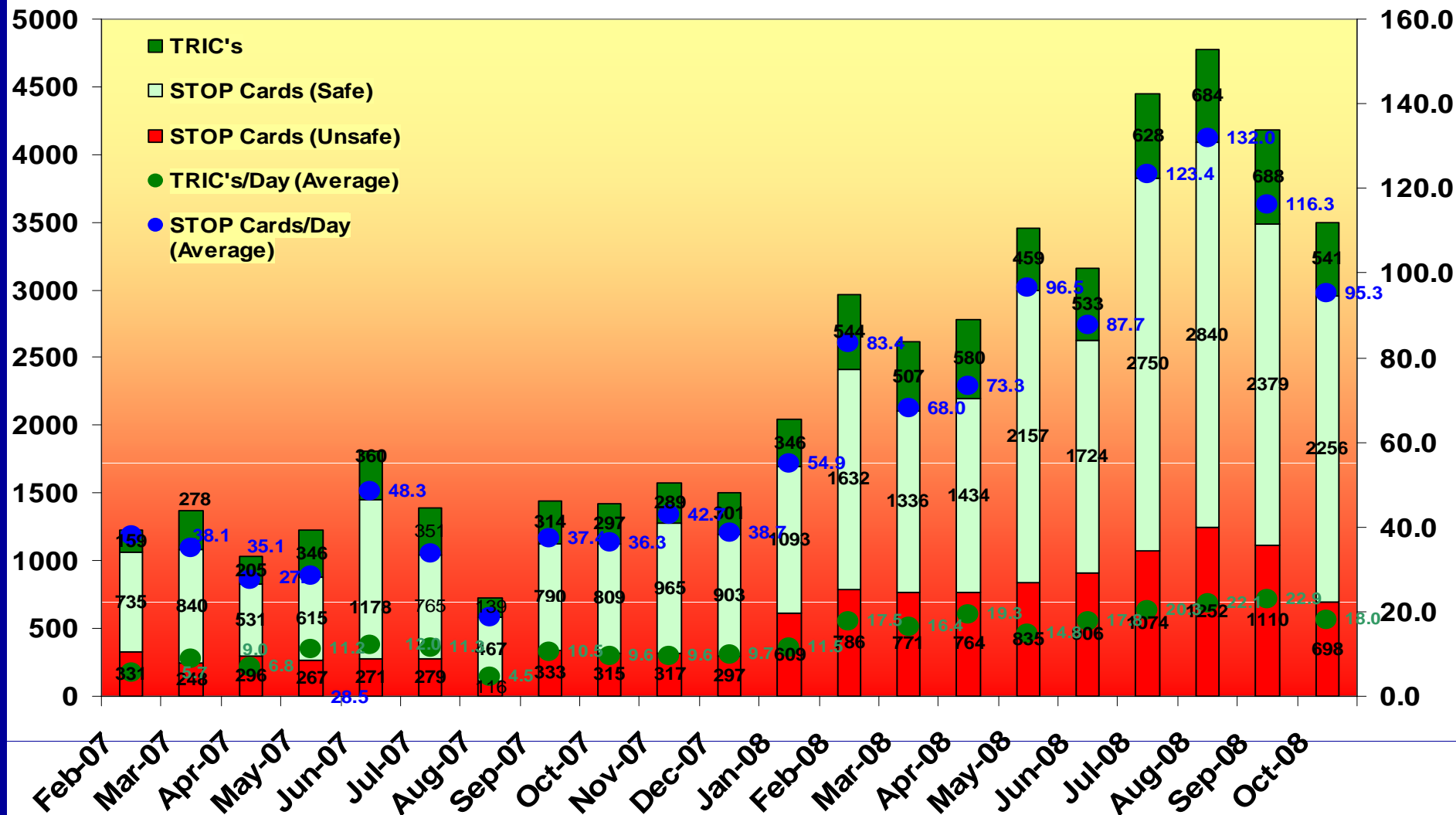
HSE (INCIDENT) STATISTICS - NGH / NRL / ENSIGN 31



QSGTL Well Engineering (cont.)



STOP / TRIC Card Participation



SLB Incident - RWC



How Did This Happen?

23rd Sept 2008

Crew rigging down batch mixing unit on the NRL after 7in Liner job on NFP 1-3. IP was racking 4" butterfly valve assembly back to the tools basket. The Little Finger of his right hand was pinched between the edge of the basket & the butterfly valve handle.



Intermediate Causes

- Improper handling and lifting
- Failure to identify hazard/risk
- Improper position for task





Root Causes

- Fatigue
- Lack of coaching and supervision
- Lack of situation awareness
- Improper or Insufficient delegation



Learning's/ Action points

- **IP was sent to Hospital on the first available chopper**
- **SLB Made & Distributed Safety Alert among the crews**
- **Competence Reassessment for new hired people before 6 months (SLB)**
- **Revisited & Coached all new SLB employees on equipment handling**